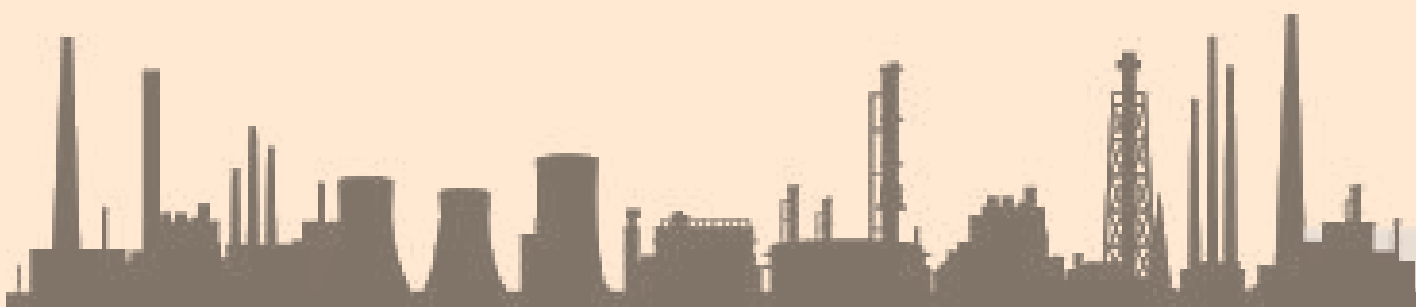




الابتداع المستقلة
INDEPENDENT INNOVATION



CONTENTS	PAGE NO.
Abrasives	3-6
Adhesives, Sealants and Tape	7-8
Cleaning and Janitorial	9-10
Electrical	11-12
Electronics, Appliances and Batteries	13-14
Fasteners	15-19
Fleet and Vehicle Maintenance	20-23
Furniture, Hospitality and food Service	24
HVAC and Refrigeration	25-27
Hardware	28-30
Hydraulics	31-32
Lab Supplies	33-36
Lighting	37-39
Lubrication	40-42
Machining	43-46
Material Handling	47-53
Motors	54-55
Office Supplies	56-59
Paint, Equipment and supplies	60-62
Plumbing	63-66
Pneumatics	67-69
Power Transmission	70-72
Pumps	73-76
Raw Materials	77-80
References and learning supplies	81
Safety, Welding	82-88
Security	89-91
Test Instruments	92-94
Tools	95-98



Item	Pneumatic Blast Cabinet
Work Area Dimensions	23" x 35-1/2" x 23-1/2"
Overall Dimensions	58" x 36" x 24"
Cabinet Material	LDPE Polymer
Includes	Gun and Hose



Item	Wire Wheel Brush
Bristle Type	Twisted Wire
Wire Dia.	0.020"
Abrasive Material	Steel
Max. RPM	20,000

Item	Dressing Stick
Abrasive Material	Silicon Carbide
Grade	Extra Coarse
Grit	24
Length	8"
Width	1"
Thickness	1"



Item	Abrasive Roll
Width	2"
Length	150 ft.
Grit	100
Color	Red

[3]



Item	Mounted Flap Wheel
Shank Type	Straight
Abrasive Material	Aluminium Oxide
Diameter	3"
Max. RPM	12,000



Item	Deburring Tool Kit
Features	Blade Storage in Handle Blade Holder Extends from 1/2 to 5" B Series Blades Can Be Inserted At 90 Degree Angle

Item	Depressed Center Wheels
Wheel Diameter	4"
Abrasive Material	Zirconia Alumina
Max. RPM	15,280
Application	Ferrous Metal , Gray Iron, Stainless



Item	Waterstones Sharpening
Number of Pieces	4
Abrasive Material	Synthetic
Grade	Coarse/Fine

[4]

Item	Vitrified Mounted Point Kit
Abrasive Material	Aluminium Oxide
Grit	60
Number of Pieces	50



Item	Buffing Compound
Color	Blue
Size	7-1/2" x 3-11/16" x 1-1/2"
Application	For Solid Plastic

Item Type	Replacement Grinding Wheel
	5-11/16" x 3/16"
	Thickness x 7/8" Arbour Hole, Aluminium Oxide
For Use With	CS-BWM Sharpener



Item	Sanding Belt
Width	4"
Length	36"
Grit	60

[5]



Item

Abrasive Type
Disc Diameter
Color

Hook-and-Loop
Sanding Disc
Non-Woven
3"
Brown



Item
Length
Width
Grade
Includes

Abrasive Hand Pad Set
9"
6"
Course to Ultra Fine
Scrubbing Sponge

Item
Width
Length
Backing Material
Includes Sheets

Sanding Sheet Assortment
9"
11"
Paper
60 Grit, 100 Grit, 150 Grit
And Sheets 220 Grit



Item
Diameter
Material
Max. RPM

Convolute Wheel
6"
Aluminium Oxide
6000

[6]

Item
 Container Type
 Begins to Harden
 Temp. Range
 Viscosity

Instant Adhesive
 Kit
 2 min.
 -65 Degrees to
 250 Degrees F
 1000 to 2000 cPs



Item
 For Use On
 Harden
 VOC
 Application

Caulk
 Concrete, Glass,
 Masonry, Metal, Plastic,
 Wood
 30 min.
 49g/L
 Indoor and Outdoor Use

Item
 Container Size
 Temp. Range
 Starts to Harden
 Includes

Concrete Patch and Repair
 25 lb.
 40 Degrees to 90 Degrees F
 15 min.
 25 lb. of Mix



Item
 Size
 Dispenses
 For Use With

Spray Foam Dispenser
 180"
 Polyurethane Foam and
 Adhesives
 Mfr. No. 7565023120

[7]



Item
Type
Tensile Strength
Max. Temp.
Functional Cure

Epoxy Putty
Fast Acting
6000 psi
300 Degrees Degrees F
20 Minutes



Item
For Use With
For Use
Fits Brand

Cylinder Hose 12 ft.
29UJ17, 29UJ18,
29UJ19, 29UJ20
90, SUPER 77,
94CA, 70
3M

Item
Duct Tape Length
Duct Tape Thickness
Tape Adhesive

Duct Tape
55m
9.00 mil
Rubber



Item
Density
Length
Liquid Pressure
Temp. Range

Thread Sealant Tape
0.35 to 0.5sg
520"
0 to 10,000 psi
-400 Degrees to 550
Degrees F



Item
Capacity
Diameter
Material

Collapsible Litter Bag
27 gal.
19"
Plastic



Item All Purpose Cleaner
Container Type Bottle
Cleaner Form Liquid
Fragrance Unscented
Effective Temp. Room Temperature

Item
Bucket Capacity
Color
Material
Depth

Squeegee Bucket
2 gal.
Black
Plastic
8-3/4"



Item Wand Assembly
For Use With Mfr. No. 9007623
Extractors
Includes 3 Spray Jets, Foam
Handle, and Trigger
Spray Control

Item Sanitary Napkin Dispenser
Size 26 lb.
Color White
Construction Metal
Includes Battery
Dispenses Sanitary Napkin/Tampon



Item Disposable Towels
Product Color White
Sheet Size 13" x 18"
No of Sheets 100
Material Nylon Scrim

Item Exhaust Silencer Insert
For Use With Mfr. Model Number
15 Gallon Units,
30 Gallon Units,
55 Gallon Units
Type Foam



[10]

Item	Building
Wire Jacket Material	Nylon
Insulation Material	PVC
Max. Amps	15
Spool Length	2500 ft.
Voltage	600VAC



Item	Watertight Pin and Sleeve Receptacle
Body Material	Valox 357
Amps	30
Voltage	250VAC
Poles	2
Wires	3

Item	Safety Mat Controller
Input Power	100 to 240VAC
Number of Inputs	6
Max. Wattage	1500W
Operating Temp.	32 Degrees to 131 Degrees F



Item	Definite Purpose Magnetic Motor Starter
No of Poles	3
Amps AC	25
Coil Volts	24VAC
HP @ 3 Phase	575V 10

[11]



Item	Power Supply Buffer Module
Input Voltage	24/28.8VDC
Power Rating	960W
Voltage Output	24VDC
Amps	40
Temp. Range	32 to 140 Degrees F



Item	Electronic Timer
Operation Mode	24hr.
Voltage	120 to 277VAC
Amps	30
Enclosure	Plastic
Mounting	Surface
Backup Device	AA Alkaline Battery

Item	Splicer
Application	Indoor/Outdoor Splicing Fibre Applications
For Use With	910FS Optical Fusion Splicer
Features	Fast Splicing



[12]



Item
For Use With
Fits Brand

Filter
Mfr. Model Number
GX1S15C
GE, Hotpoint, Kenmore



Item Commercial Dishwasher
Door Type
Voltage 208
Amps 50
Phase 3
Racks per Hour 40
Rinse Temp. 180 Degrees
Water Used 72 gal.
Construction Stainless Steel

Item
Fits Model
Replaces
Battery Chemistry
Voltage
Battery Capacity

Cordless Phone Battery
AT&T / Lucent
Technologies 27910
AT&T - Lucent
Technologies BT-5633
Nickel-Metal Hydride
3.6
700mAh



[13]



Item
Material
Color
Fits Brand

Cell Phone Case
Polycarbonate and
Silicone
Black
Apple



item
Cable Type
Connection
Color
Features
Hz
Impedance

Modular Matrix Card
HDMI
HDMI
Black
Left Side Chassis, 100m
Maximum Distance,
HDMI Input, RJ-45
30/60
100 Ohms

Item
Nominal Length
Nominal Outside Width
Nominal Height
Output Wattage
For Use With

Amplifier
5"
5"
1-3/8"
50W
SoundTube(R) and
Other High-Fidelity Speakers



[14]



Item	S Hook
Opening Size	3/16"
Overall Length	1-1/4"
Width	3/8"
Working Load Limit	17 lb.
Finish	Zinc Plated
Material	Carbon Steel



Item	Anchor Bolt
Anchor Bolt	L Hook Anchor Bolt
Anchor Material	Steel
Fastener Finish	Hot Dipped Galvanized
Anchor Length	4"
Min PSI	60,000

Item	Barrel Bolt Assortment
Type	Security
Material	18-8 Stainless Steel
Finish	Plain
Number of Pieces	90



Item	Cable Clamp
Type	Cushioned with Flared Edge
Clamp Material	Galvanized Steel
Cushion Type	Vinyl
Clamp Finish	Hot Dipped Galvanized
Temp. Range	(F) -30 to +180

[15]



Item
Type
Material
Finish
Length

Lanyard Assembly Kit
Do it Yourself
Stainless Steel
Nylon
20 Ft.



Item Engineering Laminate
 Technical Data Sheet
Type Hot Sheet E20
Height 11
Width 8-1/2
Depth 0.015
Language English
For Use Cutting Tools, Engineering
 Reference, Machining

Item
Material
Length
Width
Thickness
Measures

Thread Measuring Gauge
Plastic
9"
3.8"
0.3"
Bolts, Nuts, and Washers



Item Key Stock
Type Undersized
Material 18-8 Stainless Steel
Finish Plain

[16]

Item
Material
Finish
Head Type
Shank Type
Gauge

Box Nail
Steel
Hot Dipped Galvanized
Flat
Smooth
10



Item
Nut Style
Basic Material
Shape
Finish
Direction

Spring Nut
U Style Spring Nut
Steel
U
Black Phosphate
Right Hand

Item
Safety Pin Type
Basic Material
Material Grade
Fastener Finish
Wire Shape

Safety Pin
Double Wire Snap
Stainless Steel
304
Plain
Square



Item
Type
Material
Finish
No of Pieces
No of Sizes

Retaining Ring
Assortment
E-Style
Steel
Phosphate
255
12

[17]



Item	Blind Rivet
Rivet Style	Blind Rivet
Blind Rivet Type	Open End
Rivet Head Style	Countersunk
Rivet Body Material	Aluminum
Mandrel Material	Stainless Steel
Tensile Strength (Lb.)	471



Item	Fully Threaded Stud
Material	Alloy Steel
Finish	Plain
Thread Type	UNC
Grade	B7
Thread Direction	Right Hand
Class	2A
Min PSI	125,000

Item	Binding Barrel Extension
Material	Aluminum
Tensile Strength (PSI)	45,000
Rockwell Hardness	B60



Item	Socket Flat Head Cap Screw
Screw Style	Socket Head Cap Screw
Screw Head	Flat
Basic Material	Steel
Material Grade	Alloy Steel
Fastener Finish	Black Oxide
Drive Type	Hex Socket
Thread Style	Fully Threaded
Thread Direction	Right Hand

[18]

Item
Color
Material

Cable Staple
Gray
UV-Resistant
Polyethylene
Saddle with Zinc-Plated Nails
Service Entrance Cables
Wood



For Wire/Cable Type
For Use On



Item
Drive Type
Material
Thread Type
Application For Use on Wood

Knife Thread Insert
Slotted Drive
Brass
UNC

Item
Type
Material
Finish

Round Spacer
Clear Hole
Aluminum
Plain



Item
Flat Washer
Washer Basic
Washer Material
Fastener Finish

USS Washer
USS Type A Wide Flat
Washer
Material Steel
Low Carbon
Zinc Plated

[19]



Item
Type
Voltage
Size (In.)
No Load RPM
Amps @ 120V

Automotive Polisher
Electrical
120VAC
6
480
7.8



Item Brake Fluid
Type DOT 4
Size 1 qt.
Container Type Plastic Bottle

Item
Input Voltage
Standby Current

Siren with PA/
Radio Rebroadcast
10 to 16VDC
8 ADC



Item Work Stand
Height 45"
Width 31"
Material Steel Panels
For Use With Body

[20]

Item
Size
Application Measure

Log Book Ruler
2" x 7-1/4"
Driving Log Book Calculations



Item
Charger Style
For Battery
For Use With
Battery Type AGM, Deep
Cycle, Gel, Lead
Acid, Wet Cell

Battery Charger and
Maintainer

Handheld Portable
Voltage 12,24

Battery Type AGM, Deep
Cycle, Gel, Lead
Acid, Wet Cell

Item
Size Covers
For Use On
Material

Wire Routing
Clip Assortment
3/8" to 3/4" Loom
Universal
Black Nylon



Item
Amps
Voltage (DC)
Used For

3-Outlet Power Adapter

5

12

Automobiles, Cell Phone
Chargers, Hands Free
Cell Phone

[21]



Item
Application
Material
Lifting Capacity
Operation Type
Handle Material

Hydraulic Service Jack
Heavy-Duty
Aluminum
3 tons
Manual
Aluminum



Item
Type
Frame Capacity
Frame Type
Used For
Includes

Oil Filter Crusher
Air Operated
11(Tons)
Steel
Crushing
Mounting Stand

Item
Base
Size
Container Type
Color
Temp. Range

2-Cycle Engine Oil
Conventional
2.6 oz.
Plastic Bottle
Dark Blue
0 Degrees to 248 Degrees F



Item
Type
Length
Application

Emergency Rescue Tool
4-in-1 Hand Tool
1.3"
Glass
Breaker, High Visibility
Red Flashing Emergency
Lights

[22]

Item
Type
Material
Finish
Standards

Service Spring Chamber
30
Steel
Black Powder
SAE Test J1461



Item
Class
Capacity
Finish
For Use

Trailer Coupler
II
GVW 3500 lb.
Zinc Coated
Trailer and Tow Vehicle

Item
For Use With
Fits

Brush Head, 10",
Bi-Level Flow, Tetalon
Grainger Item
Number 53DD36
Brand Tough Guy



Item
Size
Valve
Weight
Used For

Lawn/Garden Inner Tube
18x850/950-8
TR6
1.92 lb.
WD1032, WD1033

[23]



Item	Engineered Hardwood
Wood Species	Maple
Color	Chocolate
Finish	Satin
Length	16"
Width	5"
Collection	Jasper Harbours



Item	Cashier Station Cart with
	Drawer
Color	Black
Material	Polyethylene
Compartments	1
Caster Material	Polyurethane
Caster Type	Swivel with Brakes

Item	Guest Chair
Frame Color	Black
Seat Material	Leather
Frame Material	Plywood
Arm Style	Fixed
Weight Capacity	250 lb.



Item	Upright Bike
Drive System	Self Powered Alternator
Resistance	25 Levels Features 15" HD LCD TV, 16 Programs
Max. Weight	400 lb.

[24]



Item	Ice Maker
Machine Style	Under counter
Storage Capacity	90 lb.
Ice Production per Day	198 lb.
Cube Type	Dice
Condenser Cooling	Ice Machines Air
Control Type	Ice Dispensers
Voltage	115V
Color	Stainless Steel/Black



Item	Mechanical Manifold Gauge Set
No of Valves	2
Compatibility	R-410A, R-22, R404A, R-407C
Material	Brass

Item	Fan Shroud Filter
Air Filter Media Type	Polyester
Air Filter Item	Fan Shroud Filter
For Use with	36" Dia. Circulators
Max. Temp.	150 Degrees F
Media Weight	3.3 oz./sq. yd.
Fastener Type	Hook And Loop



Item	Portable Air Scrubber
Type	Negative Air Machine
No of Speeds	Variable
Air Flow (CFM)	250 to 500
Filter Efficiency	99.97

[25]



Item	A/C Security Kit
Case Material	Polycarbonate
Voltage	230/460
Contact Form	SPDT
Contact Rating	4 amps @30VAC/DC
Pressure Range	7 to 20 psig
Fitting Size	1/2" Knockouts



Item	Axial Fan
Fan Shape	Square
Fan Voltage	115VAC
Fan Watts	20
Bearings	Sleeve
Fan RPM	2900

Item	Replacement Propeller
Propeller Dia. (In.)	22
Bore Dia. (In.)	1/2
CFM @ 0.150-In.	SP 4580
Min. HP	1/3
Max. RPM	1100
Pitch (Deg.)	27
Rotation	CW
Number of Blades	3



Item	Floor Heating Installation Tool Kit
For Use With	Radiant Floor Heating Systems
Includes	InstAlarm Installation Alarm

[26]



Item	Air Sensing Switch
Type	HVAC/General Purpose
Differential (In. WC)	0.02 to 0.8
Switch Type	SPDT
Pressure Range	0.05 to 12.0
Electrical Rating	300 VA Pilot Duty



Item	Belt Drive Motor
Application	HVAC/R Fan/Blower
Motor Design	Split-Phase
HP	1/4
No. of Speeds	1
Nameplate	RPM 1725
Voltage	115

Item	Superheating, Subcooling Meter
Number of Inputs	2 (One Pressure, One Temperature)
Temp. Range	-40 Degrees to 400 Degrees F
Pressure Range	0 to 500 psia
Display	LCD



Item	Vacuum Gauge
Type	Digital
Range	1 to 760,000 Microns
Operating Range	32 to 120 (F)
Connection	1/4" Female Flare

[27]



Item	Corner Brace
Finish	Zinc
Size (In.)	2 x 2
Width (In.)	5/8
Length (In.)	2
Holes per Leaf	2



Item	Fixed Staple Hasp
Hasp Staple	Type Fixed
Hasp Style	Conventional
Hasp Material	Steel
Hasp Length	5-1/4"
Hasp Width	1-7/8"

Item	Electronic Keyless Lock
For Use With	Cabinets
Access Method	Keypad
Usage	Assigned
Handle Type	None
Lock Material	Plastic, Steel



Item	3 Button Control Station
Transmitter	Allows Operation in 2 Directions Including Stop
Receiver Size	(In.) 2-1/2 x 5-1/2
Voltage	250
Standards	UL Listed (E91951)
Volts Range	Max. AC 24



Item
Finish
Material
Color
Surface Type

Carpet Seam Binder
Polished Aluminum
Aluminum
Silver
Smooth Top



Item
Width
Length
Color

Back-to-Back Strap
1-1/2"
75 ft.
Black

Item
Fastening Method
Points Per Hook
Number of Hooks
Basic Hook Material
Hook Finish

Utility Hook
Screw Mount
1
1
Stainless Steel
Mirror



Item
Material
Max. Pull
Stability Temp.
Includes

Shallow Pot Magnet
Alnico 5
7 lb.
800 Degrees F
Steel Keeper

Item	Backup Ring, Contoured
Material	Buna N
For Use with	AS568A Dash No. 128
Thickness	0.053"
Radius	0.129"
Actual Inside Dia.	1.518"
Cross Section Shape	Rectangular
Durometer	90 Shore A



Item	Rubber Tip
For Use With	Grainger Item Number 1XNK7, 1XNK8

Item	Compression Spring
Type	Precision
Material	302 Stainless Steel
Finish	Plain
Overall Length	1-1/2"
Outside Dia.	0.480"
Wire Type	Round



Item	Tarp Clips
Color	Black
Material	Plastic
For Use With	Canopies And Tarps
Length	4"

[30]

Item	LV Hand Held Style Filter Cart
Max. Operating Temp.	(F) 150
Filter Rating (Microns)	10
Motor HP	1/2
Voltage	115
Amps	8.8
Max. Flow	GPM 5.5



Item	Hydraulic Hose Adapter
Fitting Shape	90 Degrees Elbow
Fitting Thread 1	Male NPT
Fitting Thread 1	1"-11-1/2
Fitting Thread 2	Male JIC
Fitting Thread 2	1-5/16"-12
Max. PSI	3500

Item	Hydraulic Motor
Displacement	5.9
Pressure Rating (PSI)	2400
Shaft Type	Keyed
Port Thread	1/2-14 NPTH
Port Type	Side
Min. Oil Viscosity	100 SUS
Max. Oil Temp. (F)	180



Item	Piston Seal Kit
For Bore Dia.	2"
Material	Hytrel, Buna N
No of Pieces	6
Color	Black
Temp. Range	-40 Degrees F to 250 degrees F

[31]



Item	Accumulator Safety Block
Relief Valve setting	1740 psi
Voltage	24VDC
Inlet Port Size	#16 SAE ORB
Drain Port Size	#6 SAE ORB
Accumulator Port Size	#16 SAE ORB
Max. Flow	125 gpm
Max. Pressure	5075 psi



Item	Hydraulic Impact Wrench
Style	Pistol Grip
Chuck Size (In.)	7/16
Torque	400ft.-lb 8gpm
Torque	400ft.-lb 8gpm
RPM @ 5 GPM	4500
RPM @ 8 GPM	7000

Item	Hydraulic Cartridge
Valve Base	Hydraulic Cartridge
Valve Cavity Size	C10-2
Port Size	1/2" NPT
Max. Pressure	5000 psi
Body Material	Steel



Item	Forced Air Oil Cooler
Type	Hydraulic Motor
Coolant Flow	4 to 50
Coolant HP	20
Coolant. PSI	377
Min. PSI	500
Max.PSI	2000

[32]

Item	Grain Moisture Tester
Type	Handheld
Moisture Content	8 to 32%, Grain Dependent
Grain Temperature	32 Degrees to 104 Degrees F
Temp. Differential	36 Degrees F
Display	LCD
Cycle Time	10 Sec.



Item	Sterile Syringe Cap
For Use With	Male Luer Slip and Luer Lock Syringes

Item	ph Test Strips
Type	Hydrion Spectral
Testing Parameter	pH
Range	0 to 14 pH
Number of Tests	1



Item	Agarose
Contains	Agarose
Application	Molecular Biology
Container Size	25g
Container	HDPE
Storage	Room Temperature

[33]



Item	BioClave
Temp. Range	121 Degrees to 134 Degrees C
Max. Temp. (C)	134
Material	Stainless Steel Chamber
Capacity	16L



Item	Glass Microfiber Filter
Grade	TSS
Diameter	9.0cm
Material	Binderless Borosilicate Glass Microfiber
Temp. Range	Up To 500 Degrees C

Item	Ductless Fume Hood
Filter Type	Acids, Carbon, Formaldehyde, HEPA,
Solvents	CFM 186
Number of Filters	1



Item	System Service Hose
Gas	Nitrogen
Hose Length	90"
Connection	Male 3/8"
Max. Pressure	300 psi
Hose Material	PVC

[34]

Item
Material
Finish
Color

Labware Drain Stand
Polystyrene
Epoxy
Blue



Item
Type
Capacity
Color
Material
Meets/Exceeds

Sterile Sampling Scoop
Sterile Polystyrene
Scoop
125mL /4 oz.
White
Polystyrene
FDA Grade Material

Item
Volume
Graduations
Accuracy
For Use With
Includes

Bottle Top Dispenser
0.5 to 5mL
0.1mL
+/-0.025mL
Reagents and Chemicals
Filling Tube and Adapter



Item
Scales
Work Surface
Output
Includes

Benchtop Hardness
Tester
Rockwell A Scale 80,
Rockwell B
6
Analog Dial
Diamond and Ball
Indentors

[35]



Item

Yeast Nitrogen Base
w/ Amino Acids

Container Size

250g

Form

Powder

Solubility

Water

Storage Temp.

Room Temperature

Shelf Life

18 mo.



Item

Sieve Shaker

Sieve Diameter 8"

Full Size Sieves 8

Half Size Sieves 14

Timer Range 1 min.

Timer Type Analog

Mounting No

Power Required 110VAC, 60 Hz

Item

Pocket Vane Shear Test Kit

Length

4"

Width

2"

Height

2"

Includes

Vane Shear Dial Assembly



Item

Bottle Plunger
Replacement

[36]

Item Electronic Ballast
 Ballast Type Electronic
 Ballast Start Type Instant
 Ballast Family WorkHorse
 Ballast Voltage 120
 Light Output Normal
 Min. Starting Temp. -20 Degrees F



Item Lamp Crusher
 Includes 48" T12 Entry Tube
 Material Steel, Plastic and Rubber
 Compliance Use and Recycling of The Crushed Lamps is Regulated By The EPA
 For Use With Linear Fluorescents



Item Linear Fluorescent Lamp
 Bulb Shape T12
 Bulb Base Type Medium Bi-Pin (G13)
 Bulb Color Temp. 3000K
 Bulb Application Kitchen and Bath
 Average Bulb Life 9000 hr.



Item Emergency Light
 Signs 120 to 277
 Lamp Watts - Emergency Lighting and
 Exit Signs 2.8
 Battery Nickel Cadmium
 No of Lamp 4



[37]



Item
Light Technology
Voltage
Watts
For Use With

Replacement Bulb
Incandescent
3.8
2
Mfr. No. 10150A



Item
For Use With
Includes
Replacement Bulb
Mfr. No. SL-676, SL-677, SL-827
Tube Assembly

Item
For Use With
Material
Color

Lamp
Mfr. No. SL-1042,
SL-1075, SL-1082
Job Site Lighting Plastic
Clear



Item
Use With
Color
Dimmer Switch
Lutron Skylark Dimmers
White

Item
Mounting Pendant

Hazardous Location
Signal Light
Standards C1 1,
Div 2 Groups A, B, C, D



Item
Type

Lamp Sockets
Turn Knob On/Off

Item
For Use With
Lumens
Lamp Type
Voltage
Cord Length

Portable Floodlight
Mfr. No. CRT, TRI-HD,
PED, FLR, MAG
960
LED
120
15 ft.



Item
For Use With
Lamp Type
Lamp Watts
Voltage
Lamp Included

Dock Light Replacement
Head
24K343
LED
16
120
Yes

Item	1/8" NPT Connector
Hose Inside Dia. (In.)	1/4
Material of Construction	Acetal Copolymer
Available In	Acid Resistant Polyester
Package Quantity	4



Item	Grease Feeder
Material	Tempered Borosilicate Dome, Stainless Steel Cap and Aluminum Base
Capacity (Oz.)	4 oz.
Operating Temp.	-10 Degrees to 450 Degrees F
Spring Tension	1 to 2

Item	Cordless Grease Gun
Battery	Included
Voltage	20.0
Battery Type	Li-Ion
Grease Gun Loading	Bulk, Cartridge, Suction
Grease Gun Handle	Pistol Grip
Nozzle Extension Type	Flex Hose
Max. Pressure	10,000 psi



Item	High Load Bearing Grease
Base Oil	Mineral
Min. Temp.	-22 Degrees F
Max. Temp.	350 Degrees F

[40]

Item	Button Head Coupler 5/8"
Operating Pressure (PSI)	6000
Fitting End (In.)	1/8 FNPT
For Use With	5/8 In. Button Head Grease Fitting
Material of Construction	Zinc
Color	Shot Blast



Item	Lubricant
Lubricant NSF	Rating H1 Food Grade
Lubricant Film	Wet
Lubricant	Silicone
Min. Temp.	0 Degrees F
Max. Temp.	400 Degrees F
GHS Flammability Rating	Extremely Flammable
	Aerosol

Item	Grease Joint Rejuvenator
Application	Unclog Grease Bearings
Characteristics	Instantly opens clogged grease joints.



Item	Sprayer
Type	Reusable
Capacity (Oz.)	32
Material	Carbon Steel with Blue Enamel
Spraying Action	Uniform and Controlled

[41]



Item	Hydraulic Oil
ISO Viscosity Grade	32
SAE Grade	Not Specified
Container Size	55 gal.
Lubricant NSF Rating	Not Rated
Lubricant Additives	Zinc
Viscosity Index	100
Flash Point	400 Degrees C



Item	Grease Injector Needle
For Use With	Grainger Item Number 1ZTC9

Item	Bulk Oil Storage System
Number of Tanks	6
Tank Material	Powder Coated Alumni Steel
Tank Capacity	65 gal.
Tap Type	Gravity
Number of Pumps	1
Frame Material	Powder Coated Steel



[42]



Item
Material
Series
Finish

Tool Blank
C2 Micrograin Carbide
1000
Uncoated



Item Combined
Drill/Countersink Set
Direction Right Hand
No of Pieces 5
Material High Speed Steel
Finish Bright
Included Angle 60 Degrees
Countersink Style Plain

Item
Type
Shank Size (In.)
Number of Pieces
Tool Material

Carbide Bur Set
Double Cut
1/4
9
Carbide



Item Drilling Insert
Insert Shape Square
Insert Style SEC
Insert Size 532
Grade C5
Cutting Direction Neutral
Rake Positive

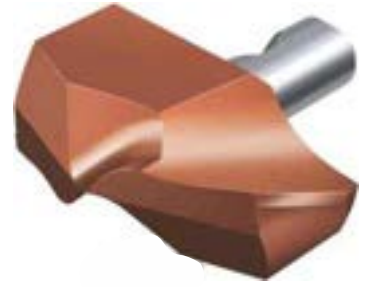
[43]



Item
Insert Position

Application
Workpiece Material
Grade
Insert Shape

Exchangeable Drill Tip
142 Degrees Included
Angle
P30
Steel
4234
71 Degrees Entering Angle



Item
Type
Series
Pattern
Feed
Wheel
Shank

Knurling Tool
Milling Machine
MMKT
Diamond Or Straight
Flat-Face
In And End
Single
Weldon

Item
Type
Number of Pieces
For Use With

Clamp
Forged Tapped
1
Studs



Item
Voltage
Phase
Hz
Spindle RPM
Swing
Machine Weight

OD Grinder
220
3
60
10,000
10"
4500 lb.

[44]

Item
Type
For Removing
Material
Application

Spiral Flute Screw Extractor
Spiral Flute
Studs, Bolts, Screws
Carbon Steel
Removing Broken Screws



Item
Application For Tool and Die Makers,
Maintenance Mechanics,
Characteristics Felt Tip
Applicator , Uniform
Deep Color,
Color Red
Container Style Bottle

Item
Radius
Overall Length
Shank Dia.
End Style
End
Angle
Cutting Direction
Finish

Die Sinking Cutter
.031"
2"
1/8"
Ball
Round
6 Degrees
Right Hand
Uncoated



Item
Number of Pairs 10
Range 1/2 to 1-5/8
Parallelism (In.) +/-0.0002
Includes Plastic Moulded Case

[45]



Item
For Use With
For Use With
Fits Brand

Barrel Ring
Grainger Item
Number 3JR93, 4KR11
Mfr. Model Number 102760G-
A,102760G-A
Econoline



Item
Function
Includes

Economixer 100
Consistently Mixes
Coolant Concentrate
with Water at Desired
Level, Dispenses
Directly to Coolant
Sump
Shut-Off Valve, Nozzle
and Tubing

Item
Die Shape
Number of Pieces
Die Material
Thread Type

Die Set
Hex Fixed
20
Carbon Steel
NC, NF



Item
Style
Overall Length
For Use With

Tool Block
Straight
3-5/16"
Cut-Off Blades Size 21

[46]



Item	Barrier Grab
Concrete Barrier Width	6" to 12"
Capacity	14500 lb.
Material	1-29/32"
Standards	ASME B30.20, BTH1



Item	Bicycle/Tricycle Tube
Tube Size	24 x 2-1/8"
Wheel Dia.	24"
For Use With	Workman Adaptable Tricycles
Application	Bicycle/Tricycle

Item	Bin Cabinet
Bin Cabinet Style	Louvered Panel
Cabinet Strength Rating	Heavy Duty
Bin Cabinet Door Style	Deep/Louvered Panel
Mobile/Stationary	Stationary
Color	Black
Cabinet Handle Style	Swing



Item	Double Gated Carabiner Clip
Size	1-9/16"
Material	Stainless Steel
Color	Silver

[47]



Item
Load Capacity
Container Material
Frame Material
Color

Basket Truck
600 lb.
Vinyl
Steel
Red



Item
Caster Load
Load Rating
Caster Brake
Caster Swivel
Caster Core
Wheel Color
Bearings

Plate Caster
Light-Duty
120 lb.
No
No Lock Included
Polyolefin
Black Caster Wheel
Plain

Item
Welding Type
For Lifting
Chain Link Style
Grade
Working Load Limit
Finish

Chain
Welded
No
Straight
30
1200 lb.
Self Colored



Item
Type
Style
No of Links
Includes

Cable and Hose Carrier
Small
Zipper
16
No Bracket Included

[48]

Item
Capacity
Color
Finish
Material Welded
Operation Mode

Davit Crane
500 lb.
Gray
Galvanized
Steel
Manual



Item Dock Bumper
Bumper Material Rubber
Bumper Shape Rectangular
No of Holes 2
Mounting Style Bolt On

Item
Load Capacity
Caster Material
Overall Width
Material

Desk Mover
600 lb.
Hard Rubber
32"
Steel Tube, Iron Casting



Item Insulated Cover
Height 41"
Width 45"
Length 48"
For Use With (4) Steel Drums or (1) IBC

[49]



Item

Load Capacity

Powered By

Voltage

Braking System

Steering

Counterbalanced Rider
Forklift

3500 lb.

AC Hydraulic Motor

49 VAC

Hydraulic Wet Disc
Braking System

Hydrostatic Power



Item

Load Capacity

Hoist Lift

Brake

Clutch

Control

Chain Hoist

2000 lb.

20 ft.

DC Current

Friction

110V Push Button

Control Pendant

Item

Material

Load Capacity

Insulated

Attic Ladder

Attic Ladder

Aluminum

375 lb.

No

Closure Spring Assist



Item

Load Capacity

Lift Control

Lift Mechanism

Frame Material

Mobile/Stationary

Scissor Lift Table

1500 lb.

Push Button

Hydraulic

Steel

Mobile

[50]

Item
 Mounting Style
 Pivot
 Swivel Angle
 Working Load Limit
 Installation Torque

Hoist Ring
 Screw-On
 180 Degrees
 360 Degrees
 5000 lb.
 100 ft.-lb.



Item Electromagneti
 Max. Capacity 2800 lb.
 Overall Diameter 8-5/8"
 Overall Height 10-1/2"
 Footnotes Max. Capacities Based On
 Clean

Item
 Assembled
 Color
 Finish
 Legs Included
 Locker Handle Type
 Locker Door Type

Cell Phone Locker
 Yes
 Gray/Black
 Matte
 No
 None
 Solid



Item Hanger Mount Vibration
 Isolator
 Isolator Type Spring
 Spring Color Blue
 Color Mark Blue
 Bushing Type Rubber

[51]



Item

Heat Activated
Shrink Film

Material
Style

Polyethylene
Industrial, Single
Wound

Color
Max. Shrink
For Use With

White
30%TD, 30% MD
Propane Heat Gun



Item	Pallet Jack Style
Construction	Steel
Operation	Manual
Handle Cushion	Grip
Finish	Powder Coated
Color	Red
Wheel Base	43"

Item
For Use With

Lock and Key
Grainger Item Number
1PBJ9, 1LWP1, 1LWP2,
1LWP3

For Use With Mfr.

Model Number
FG9T7500BLA,
FG9T7600BLA,
Rubbermaid Commercial



Fits Brand



Item	Chain Sling
Grade	80
No. of Sling Legs	1
Color	Black, Red
Finish	Painted
Sling Length	10 ft.

[52]

Item	Rigging Rope
Rope Sub-Category	All Purpose
Rope Material	Nylon/Polyester
Rope Construction	Kernmantle
Tensile Strength	6079 lb.
Color	White



Item	Calibration Weight
Certificate	No Certificate
Weight Style	Hook
Weight Material	Cast Iron
Finish	Painted

Item	Bin Rail Floor Rack
ESD Conductive	Yes
Number of Sides	1
Total Number of Bins	0
Color	Black
Finish	Conductive
Material	Steel



Item	Computer Enclosure
Finish	Powder Coated
Color	Light Gray
Material	Steel
No of Shelves	4
No of Drawers	2
Lock Included	Yes

[53]



Item	DC Permanent Magnet
Motor Application	General Application
Motor Design	DC Permanent Magnet
Motor Enclosure	Totally Enclosed
Nameplate RPM	1800
Voltage	12VDC
Full Load Amps	58.0



Item	Light Duty Air Compressor Motor
Application	Air Compressor
Motor Design	Capacitor-Start/Run
Motor Enclosure	Open Dripproof
HP	5
Nameplate RPM	3450

Item	Premium Efficiency Metric Motor
Motor Application	General Application
Motor Design	3-Phase
Motor Enclosure Design	Totally Enclosed Fan-Cooled
HP	1-1/2
kW	1.12
Nameplate RPM	1725



Item	HVAC Motor
Application	HVAC/R
Sub Application	Direct Drive Fan/Blower
Motor Design	Shaded Pole
Motor Enclosure	Open Air-Over

Item
Bracket Type
For NEMA Frame
For Use With
Application Mounts

Motor Mounting Bracket
Torsion Flex
48
5 5/8" Diameter Motors
Motor to Blower Housing



Item
Application
Sub Application
Motor Design
Motor Enclosure
HP
Nameplate RPM

Close-Coupled Pump
Motor
Pump
Close-Coupled Pump
3-Phase
Open Dripproof
5
1175

Item
Includes
Type
For Use With

Replacement Motor
Brush Set
2 Brush and 2 Springs
DC
6ML51 6ML52 6ML53



Item
Input Voltage
Voltage Output
Hz
Max. Amps
HP

Variable AC Voltage
Supply
120VAC
120VAC
50/60
15
1.5

Item	Manual Projection Screen
Screen Size	70 x 70"
Mounting Method	Wall or Ceiling
Screen Color	White
Screen Material	Matte Vinyl
Frame Material	Steel



Item	Storage Clipboard
File Size	Legal
Clip Capacity	1/2"
Clip Type	Serrated
Color	Clipboard Silver
Opening Type	Side
Basic Material	Clipboards Metal

Item	Dry Erase Board
Board Properties	Magnetic
Mounting Type	Wall Mounted
Board Color	White
Dry Erase Surface	Finish Gloss
Frame Color	Gray
Board Frame Material	Steel



Item	Wall Calendar
Refills	No
Style	Calendars Wall
Format	One Month Per Page
Color	White/Blue/Gray

[56]



Item
Size
Color
Material

Paper Clip
1-1/2"
Assorted
Plastic



Item
Digital/Analog
Clock Type
Display Type
Shape
Frame Color
Power Source
Mount

Wired Synchronized
Digital Clock
Digital
Radio Frequency
LED
Rectangle
Black
Electric
Wall

Item
Color
Material
Includes Snap

Replacement Regular
Pivoting Pockets
Assorted
Plastic
On Index Tabs



Item
Color
Material
Overall Length
No of String

Pennants
Multicolor
Polyethylene
100 ft.
60

[57]



Item	Binding Machine
Binding	Comb
Bind Method	Electric
Bind Capacity	500 Sheets
Punch Method	Electric
Punch Capacity	20 Sheets



Item	Aerosol Duster
Recommended	For Electronics, Office Equipment
Net Weight	10 oz.
Size	16 oz.
Standards	VOC Compliant
Includes	Extension Tube

Item	Calculator
Type	Pocket
Display Digits	8
Display	LCD
Application	General Calculations



Item	Business Card/Paper Clip Holder
Color	Black
Material	Plastic
Length	3"

[58]



Item
Cover Material
Cover Color
Die-Cut Slots
Acid Free

Certificate Cover
Card Stock
Navy/Gold
Yes
Yes



Item
Type Include

Impulse Sealer Spare
Parts Kit
Heating Element, Glass
Tape Strip, PTFE Cover

Item
Material
No of Compartments
Color
Includes

Cash Drawer
Steel
10
Black
(2) Keys, Alarm Bell



Item
No of Bands
Font
Material

Date Stamp
4
18
Metal

[59]



Item
Color
Color
Finish
Application Temp

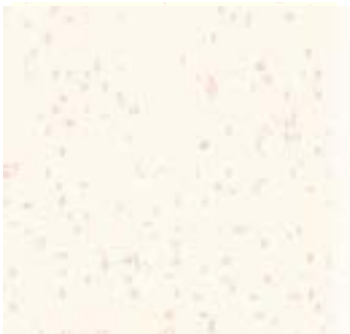
Self Etching Primer
Family Greens
Dark Green
Flat
50 to 90 Degrees F



Item Smart SideKick(R)
Power Roller
Roller Length 9"
Capacity 1 to 5 gal.
Paint Type Latex and Oil Based
Includes Base Unit, Hose, Roller,
5 gal. Adapter

Item
For Use On
Paint Base Type
Paint Color Family
Color
Finish

Clear and Translucent
Coating
Surface Material Wood
Oil
Reds
Pacific Redwood
Flat



Item Interior High Build Paint
For Use On Surface Material
Drywall, Masonry, Metal,
Plaster, Wood
Paint Base Type Latex
Color Dover White
Finish Eggshell

[60]



Item
Size
For Use With
Features

Paint Flocculation Agent
4000g/3000g
Mfr. No. 51608
Separates Latex Paint
Solids From Clear Water



Item Paint Collector Filter
Bag
Overall Height 20"
Overall Depth 12"
Overall Width 20"

Item
Head Type
Construction
Application For Mixing
For Use With

Paint Mixer
Spiral
Nickel Plated Steel
Drywall Mud or Paint
3/8" or Larger Variable
Speed Drill



Item Air Brush Kit
Rating General
Nozzle Size 0.013"
Free Air CFM 40 PSI 0.30
Air Pressure 20 to 50 psi

[61]



Item
Type
For Use With

Gun Filter
100 Mesh, Blue
Mfr. No. 288430, 288420



Item
Base Type
Resin Type
Color Family
Color

NeverWet(R) Fabric
Spray
Solvent
Acrylic
Clears
Clear

Item
Length
Width
Color
For Use With

Spray Can Grip
7-3/8"
1-3/4"
Black
Aerosol Spray Can

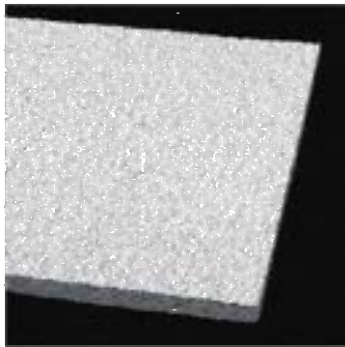


Item
Length
Width
Thickness
Material
Color

Construction Film
100 ft.
20 ft.
6 mil
Polyethylene
Clear

[62]

Item	Baby Changing Station
Horizontal/Vertical	Horizontal
Flush Mount/Recessed	Mount Flush Mount
Material	Polyethylene
Weight Capacity	50 lb.



Item	Ceiling Tile	Ceiling Tile
	Ceiling Tile	Product Group Ceiling Tile
Material	Mineral Fiber	
Series	Armatuff	
Edge Type	Square Lay-In	
Texture	Coarse	

Item	Downspout Adapter
Wall Type -	Drains Single
Length	8-1/2" to 16"
Pipe Dia.	4"
Material -	Pipe Polyethylene



Item	Aerator
Thread Size	Type Dual
Flow Outlet	Type Spray
Finish	Chrome
Aerator Features	Pressure Compensating

[63]



Item	Basket Strainer
Pipe Size	2"
Connection Type	Socket/Threaded
Height	15-1/2"
Mesh	1/8"
Screen Material	PVC



Item	Drinking Fountain
Type	One Handle Non-Metering
Material	Brass
Connection	1/2 NPSM

Item	Garbage Disposal
HP	1
Connection Drain	1-1/2"
Voltage	208-230/460
Overall Height	17"
Grinding Capacity	85 oz.
Finish	Stainless Steel



Item	Outlet Box
Type	Ice Maker
Inlet Connection	Copper Sweat
Drain Location	No Drain
Construction	Material of Polystyrene Box

[64]

Item
Fitting Type
Fits Max.
Insulation Material
Jacket Material
Color

Insulated Fitting Cover
90 Degrees Elbow
O.D. 3-1/4"
Fiberglass
PVC
White



Item
Body Style
Body Material
Shut-Off
Max. Pressure

Gagecock
Straight Pattern
Stainless Steel
Ball Check
500 psi @ 100 Degrees F

Item
Body Material
Coupling Type
Connection Type
Max. Pressure
Gasket Material

Coupler
Polypropylene
D
Female Coupler x FNPT
125 psi
EPDM



Item
Type
Fitting Type
Braid Material

Flexible Hose Assembly
Braided
Brass MNPT X Brass
FNPSM Swivel
Stainless Steel

[65]



Item

Includes
For Use With

Backflow Preventer
Test Kit, 5 Valve
Analog Test Gauge
Pressure Vacuum Breakers



Item Gasket
Type Grade T
Size 6"
Construction Nitrile
Temp. Range -20 Degrees to 180
Degrees F

Item
With/Without Faucet
Body Material
Mounting Type
Color
Faucet Operation
Flow Rate

Hand Sink/Eye Wash
With Faucet
Stainless Steel
Wall
Silver
Standard
1.0 gpm



Item Temporary Strainer
Type Cone Style
Connection Wafer Flat Face
Construction 304 Stainless Steel
Max. Pressure 740 PSIG

[66]

Item
Base Mineral
Food Grade
Container Type
SAE Grade
Viscosity @

Non-Detergent Compressor Oil
Oil
No
Bottle
30
40C 104.6 cSt



Item
Positive Displacement
Blower/Vacuum Pump
Displacement 0.140 cu. ft./rev.
CFM Range 134 to 359
RPM Range 1070 to 2850
Max. Pressure 15 psi
Max. Vacuum 16.0" Hg
Standards ISO 9001

Item
Filter Rating
For Use with
Fits Series

Coalescing Filter Element
0.5 micron
Stock Number 6B257, 6B256
M30



Item
Type
Material
For Tubing O.D.
Fitting Size
Color
Tubing Fitting
Threaded Adapter
Plated Brass
1 25.00mm
1/2"
Black

[67]



Item	Combination Air/Electric Reel
Voltage	120
Amps	13
Wire Gauge (AWG)	16
Plug Type	NEMA 5-15P
Receptacle Type	Plug
Max. Pressure	300 psi



Item	Band Clamp
Type	Center Punch
Construction	201 Stainless Steel For
Use With	Mfr. No. GRSM17

Item	Air Hose
Hose Media	Air, Mild Chemicals, Water
Max. Pressure	250 psi
Coupling Material	Brass



Item	Air Motor
HP	1.7
Rotation	REV
Material	Cast Iron and Aluminum
Finish	Gray
Max. Torque	300

[68]

Item	Air Cylinder
Cylinder Action	Double Acting
Air Cylinder Bore Dia.	7/16"
Stroke	2"
Air Cylinder Type	Round Body
Air Cylinder Mount	Nose
Body Material	Stainless Steel



Item	Pneumatic Moil Point Chisel
Non-Sparking	No
Shank Length	2-3/8"
Shank Shape	Round

Item	Push to Connect Fittings Kit
Body Material	Nickel Plated Brass
Connection Type	Push to Connect and Universal Thread
Max. Pressure	190 psi



Item	Filter Ball Valve
Inlet Port Size	1/4" and 1/2" Flare
Drain Port Size	3/8" NPT
Max. Pressure	725 psi
Body Material	Brass
Handle Material	ABS
Handle Type	Lever
Stem Material	Brass

[69]



Item	Angular Contact Ball Bearing
Type	Double Row
Bore Dia.	17mm
Outside Dia.	47mm
Width	22.2mm
Max. RPM	12000
Dynamic Load Capacity	4500



Item	Conduit Box
Mounts On the	Clutch/Brake
Length (In.)	3-1/4
Width (In.)	2-3/16
Height (In.)	2-13/16
For Use With	All Series

Item	Quick Detachable Bushing
Bore Bushing Series	SDS
Bore Dia.	3/4"
Length	1.313"
Material	Steel, Iron
SAE Grade	5
Includes	Cap Screws



Item	Spur Gear
Pitch	6
Keyway	None
Setscrew	Not Included
Material	Steel

[70]

Item	DC Gearmotor
Gearmotor Voltage	90VDC
Max. Torque	464.0 in.-lb.
Gearmotor Shaft Type	Single
Gearmotor Shaft	Parallel
Nameplate RPM	60



Item	Acme Nut
Screw Dia.	0.625"
Turns Per Inch	2
Thread Direction	Right Hand
Material	Bronze
For Use With	Acme Screws

Item	Round Belt Connector
Diameter	1/2"
Material	Aluminum
For Use With	Hollow Core Round Belts
Standards	FDA



Item	Ball Bearing Idler Sprocket
Industry Chain	60
No of Teeth	13
Outside Dia.	3.500"
Bore Dia.	5/8"
Teeth Material	Hardened Steel
Lubrication	None

[71]



Item

For Use With

For Use With

Fits Brand

Current Relay,
115/230V

6K328, 6K329

014-200-9017,

014-200-9018

Dayton



Item

Size

Material

Rated Torque

Max. RPM

Jaw Coupling Insert

FC38

Bronze

7000 in.-lb.

300

Item

Pitch (In.)

Gearbelt Type

Number of Grooves

Bearings

Material

For Use With

Gearbelt Pulley Idler

3/8

L

22

Needle

Steel

ATN1 And SATN1 Units



Item

Nominal Ratio

Input RPM

Output RPM

Input HP

Output HP

Output Torque

Ratio

2.929

1750

598

3.64

3.53

384

Multiplier

[72]

Item Diffuser Mount
 Type Universal
 Material of Construction Polypropylene
 Includes 3/4" FPT Fitting



Item Booster Pump
 Booster Pump Booster Pump
 HP - Pumps 1
 Voltage - Pumps 120/240VAC
 Phase - Pumps 1
 Amps 13/6.3

Item Chemical Solution Tank
 Material of Construction Polyethylene
 Tank (Gal.) 15
 For Use With Mfr. No. 85MJH1A1STG1-
 85MJL5A1STG1
 Includes Mounting Hardware



Item Potable Water
 Circulating Pump
 Shut-Off 4.5 ft.
 RPM 3250
 Mechanical Seal No
 Standards UL-CUS

[73]



Item	Condensate Removal Pump
Voltage - Pumps	115VAC
HP - Pumps	1/10
Watts	225
Reservoir Capacity -	1 gal.
Discharge Size - Pumps	3/8" Copper Tube
Max. Head Range	30 ft. and above



Item	Pump
Type	Centrifugal Coolant
HP	1
Phase	3
Amps	3.5/1.8
Voltage	230/460
No of Stages	4
Includes	By-Pass Kit

Item	DEF Transfer Electric Mini Cart
HP	1/2
Voltage	115VAC
GPM	8
Housing Material	Stainless Steel
Includes	(2) Wheel Cart

Item	DEF Transfer Electric Mini Cart
HP	1/2
Voltage	115VAC
GPM	8
Housing Material	Stainless Steel
Includes	(2) Wheel Cart



Item	Self Filtering Pump
Microns	5
RPM	3400
Max. Pressure	45 psi
GPM	102
HP	15

[74]

Item	Pump
Type	Flexible Impeller
HP	3/4
Voltage	115/230
Amps	13.5/6.7
Inlet/Outlet (In.)	1 NPT
NEMA Motor Frame	56YZ
Impeller Material	Nitrile



Item	Oil Transfer Pump
Type	Electric
HP	1/2
Voltage	115/230 VAC
GPM Max.	4

Item	Parts Washer Pump
HP	1/150
Amps AC	1.1
Shut Off	7.5
PSI	3.2
Housing	Die Cast Aluminum



Item	Hand Pump
Type	Diaphragm
Inlet Size	1" HB
Outlet Size	1" HB
GPM	12
Material	Polypropylene
Max. Viscosity	31 SSU
Nozzle Material	Nylon Filled Plastic

[75]



Item
Type
Flow Capacity (GPM)
RPM
Seal
Bearings

Pressure Plunger Pump
Belt-Drive
4
1750
Cotton Duct, Buna N
Ball



Item
Material
Voltage
Watts
No of Lamps
Lamp Type
Cord Length

Accent Pond Light Kit
ABS
12V
3
6
LED
30 ft.

Item
For Use With
Schedule

Gutter Drain
2 1/2" x 4" Deck
40



Item
Type
For
Shaft Size (In.)
Material

Circulating Pump
Coupler
Clockwise Rotation
Pump Number 4RD13,
4RD14, 5YN64 to 72
1/2 x 1/2
Cast Iron

[76]

Item	Precision Ball
Material	High Carbon Chrome Steel
Alloy Type	52100
Grade	25
Min. Crush Load	1718 lb.



Item	Plate Stock
Thickness	0.063"
Alloy	Aluminum 6061
Finish	Mill
Temper	T6
Hardness Scale	BHN

Item	Metal Assortment
Material	Aluminum, Brass, and Copper
Finish	Mill
Includes	Display Rack

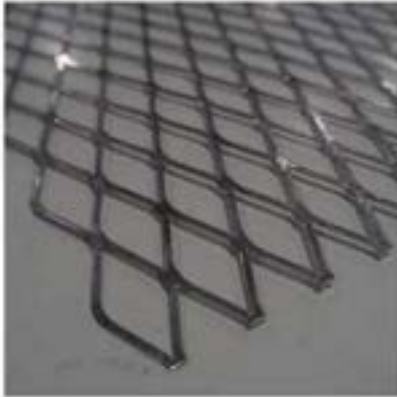


Item	Flat Stock
Type	General Purpose
Material	Brass
Alloy Type	360
Finish	Mill
Temper	Half Hard

[77]



Item	Sheet Metal Strip
Material	Bronze
Alloy Type	510
Thickness	0.008"
Length	12"
Standards	ASTM B103



Item	Expanded Sheet
Style	Flat
Material	Carbon Steel
Finish	Mill
Alloy Type	1008
Temper	Cold Rolled

Item	Rod Stock
Type	General Purpose
Material	Cast Iron
Alloy Type	CL 40 Gray Iron
Temper	As Cast
Hardness Scale	BHN



Item	Corrosion Resistant Precision Ball
Material	Silicon Nitride Ceramic
Grade	10
Vickers Hardness	1400 to 1600 HV20
Application	Aerospace, Energy, Medical

[78]

Item
Material
Alloy Type
Finish
Temper

Foil Roll
Copper
110
Plain
Soft



Item
Type
Material
Thickness
Package Qty

Sheet Stock
Semi Rigid Insulation
Cork
1/2"
1

Item
Length
Width
Thickness
Max. Temp.

Fiberglass Fabric
108 ft.
40"
0.005"
500 Degrees F



Item
Material
Color
Backing Type
Diameter
Thickness
Grade
Density

Felt Disc
Wool Felt
White
Adhesive
4"
1/8"
F1
2 lb./sq. yd.

[79]



Item
Min. Height
Max. Height
Load Capacity
Material

Adjustable Pedestal
6-1/2"
9-1/4"
150 psf
Non-Magnetic
Thermoplastic Polyester



Item
Cell Type -
Material -
Size -
Color -
Finish

Foam Cube
Foam Open Cell
Foam Polyether
Foam Cubes and Balls 7
sq. in.
Foam Charcoal
Smooth Cellular

Item

Hand Roller



Item
Style Top
Fits Edge
Leg Length
Bulb Dia.
Material
Color
Min. Temp. (F)
Max. Temp. (F)

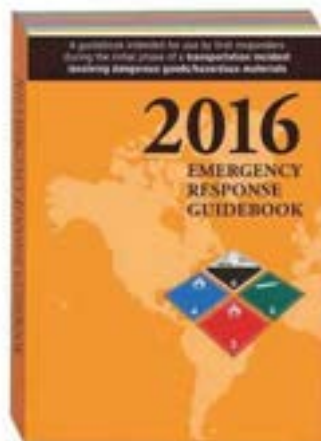
Edge Grip Seal
Bulb w/Vinyl Grip
0.125"
.5625"
0.437"
EPDM
Black
-20
150

[80]

Item
Book Title

Book Format
Book Type
Publisher
Language

Reference Book
2016 Emergency
Response Guide
Paperback
Safety and DOT
Labelmaster
English



Item
Book Title

Language
State/Province
City/Area

Cost Estimating Book
HomeTech House
builders Cost Estimator
English
MD
Covered Baltimore and
Vicinity
Paperback

Item

Material
Number of Openings
Casters

Mobile Microscope
Storage Cabinet
Hardwood
24
4



Item
Type
Material
Color
Legend
For Use With

Badge Holder
Retractable
Plastic, Metal, Nylon
Green
Safety Is For Life
ID Cards, Badges

[81]



Item
Color
Material

For Use With
Includes

Magnetic Blanket Button
Red
Four Permanent Floating
Magnets
Insulating Blankets
One Way Eyelet



Item Airless Spray
Encapsulant
Size 8 oz.
Coverage 35 to 40 sq. ft. per Can
Color White

Item
Power Source
HP
Duct Dia.
Material
Blower/Fan Speed

Confined Space
Ventilation/Fan
Air Driven
Air Only
24"
Aluminum
Venturi Operation



Item Hooded Disposable
Coveralls
Protection Dry Particulate, Reduced
Spray
Coverall Style Hooded Coverall
Clothing Size M
Ankle Style Elastic

[82]

Item
Material
Color
Closure Type

Fanny Pack
Nylon
Orange
Zipper



Item
Mounting
Hose Length
Drench Hose
Flow Rate
Covers

Dual Head Drench Hose
Wall
12 ft.
Stay-Open
3.2 gpm
Flip Top

Item
Material
Color
Provides

Cadaver Bag w/
Curved Zipper
Vinyl
White
Storage or Transport for Deceased



Item
Length
Power Source
Rate
Force

Automated Chest
Compressions Machine
21"
Compressed Oxygen
100 Per min.
0kg to 70kg of Thrust

[83]



Item
Material
Edges
Color

Kneeling Pad
NBR
Tapered
Black



Item
Material
Color

Specimen Pass-Thru
Cabinet
Stainless Steel
Silver

Item
Laser Type
Eyewear Frame Design
Visible Luminous
Optical Density @
Lens Material
Filter Number

Laser Safety Glasses
CO2
Wraparound
89%
Wavelength Greater Than 9 @ 190-360nm
Polycarbonate
100



Item
Eyewear
Lens Color
Lens Coating
Frame Color
Lens Material

Goggles and Faceshield
Venting Indirect
Clear
Anti-Fog, Anti-Static,
Scratch-Resistant
Gray
Polycarbonate

[84]

Item
Harness Size
Weight Capacity
Includes

Fall Protection Kit
Universal
310 lb.
Five Point Full
Body Harness



Item
Size
Fits Chest Size
Inseam
Color
Material
Closure Type

Turnout Coverall
S
38"
29"
Yellow
Nomex(R)
Zipper/Hook-and-Loop

Item
Length
For Use With
Material
Weight Capacity
Features

Emergency Escape Ladder
25 ft.
3 Story Structures
Steel
1000 lb.
Tangle-Free, One-Time Use



Item
Color
Waterproof
Width
Length

Self-Adherent Wrap
Beige
No
2"
5 yd.

[85]



Item
Material
Length
Size
Fabric Weight
Closure Type

Leggings
Aluminized Carbon Kevlar(R)
14"
L
19 oz.
Hook-and-Loop



Item
Bristle
Bristle Color
Dimensions

Boot Brush with Scraper
Material Polypropylene
Black
9"L x 6"W x 5"H

Item
Gas Type
Number of Channels
Sensor Range
Resolution
Alarm Type
Display
Status Indicator

Gas Detector, Controller, Transducer
CO
2
0 to 200 ppm
1 ppm
Audible and Visual
LED
Yes



Item
Material
Size
Coating
Coating
Color
Cuff

Antistatic Gloves
Nitrile
XS
Nitrile
Palm
Gray/White
Rolled

[86]

Item	TIG Welding Rod
Diameter	3/32"
Length	36"
Container Type	Tube
Container Size	10 lb.
Material	Stainless Steel
AWS Classification	ER308L
Tensile Strength	88,000 psi



Item	Portable Fume Extractor
Air Flow	150
MERV	13
Input Voltage	110V
Sound Level	75
Series Series	100
Filter Media	Nanofiber

Item	Hand Torch
Ignitor Instant	On/Off
Flame Type	Swirl
Series	TS8000
MAPP Btus per Hour	12,327
MAPP Temp.	3650
MAPP Gas Soft Solder	1/4" to 4"
Propane Btus per Hour	12,936



Item	Weld Control
Type WC-24,	15/30 Amp
Amps	AC 24
Duty Cycle	100

[87]



Item	Engine Driven Welder
Series	Bobcat 250
Start Type	Electric
Rated Output	25V, 60%
Rated Output	25 V, 100% Duty Cycle
Amperage Range	40 to 250
Continuous Power	9500W
Peak Auxiliary Power	11,000W



Item	Plasma Cutter
Rated Output	12A
Input Voltage	120V
Cutting Capacity	1/4
Cable Length	12
Series	AirForce 12ci
Input (Amps)	20A

Item	Welding Helment
	Headband and Mounting Hardware
For Use With	Mfr. Model Number 9000 Series
Fits Brand	3M



Item	Desoldering Braid
Braid Number	3
Color	Green
Spool Type	Anti-Static
Flux Type	Rosin

[88]

Item	Retractable Barrier
Color	Orange/Red/White
Finish	Matte
Material	Plastic
For Use With	Standard Traffic Cone



Item	Hand-Held Metal Detector
Type	Super Scanner V
Material	ABS Plastic
Audio	Alarm Selectable
Frequency (Hz)	93 kHz



Item	Door Window Frame Kit
Material	Steel
Finish	Dark Bronze
For Use With	Wood or Metal Doors



Item	ID Card Printer
Type	Single-Sided
Print Speed	38 Seconds Per Card
Resolution	300 dpi
Cards per Roll	100
Card Loading	25 Card Capacity
Card Type	PVC



[89]



Item
For Use With
Features
Includes

Mailbox Lock
Mailbox 4B Interior
Multicam
(2) Keys and (5) Cams



Item Luggage and Briefcase
Padlock
Body Material Brass
Body Thickness 1/2"
Body Width 1-3/16"
Body Color Black
Dial Location Side
No of Dials 3

Item
Size
Color
Material
Fits Chest Size
Garment Style
Fabric Weight

Parka Jacket
M
Black
100% Nylon
38" to 40"
Parka
6.5 oz.



Item
For Use With
Fits Brand
Combination Chamber
Mfr. Model Number
5000
Simplex

[90]

Item	Cash Depository Safe
Color	Gray
Net Weight	20 lb.
Capacity	0.25 cu. ft.
Material	Solid Steel
Finish	Powder Coated
Max. User Codes	1
Includes	Bolt-Down Kit



Item	Access Control Receiver
Frequency	304.000 MHz
No of Channels	1
Output	Solid State
Powered By	11 to 24VDC or 12 to 16VAC
Operating Temp.	32 Degrees to 140 Degrees F

Item	Carry Bag
Material	Nylon
Color	Black
For Use With	Small Ballistic Shields



Item	Personal Safety Horn
Coverage	39 ft.
Sound Level	112dB
Horn Material	Plastic
Operating Temp.	20 Degrees to 120 Degrees F

[91]



Item	Anemometer
Sensing Method	Rotating Vane
Data Logging	No
Humidity Sensing	Yes
Vane Material	Plastic
Case Color	Black
Includes	Carrying Case



Item	Heavy-Duty, Automatic Single Compactor with Stationary Mold
Type	Marshall
Mold Diameter	6"
Foot Type	Flat
Input Power	115V 60Hz
Special Features	Digital Counter

Item	Automotive Multimeter Kit
Voltage (DC)	600 mV-1000
Voltage (AC)	600 mV-1000
Amps DC	60mA-10A
Amps AC	60mA-10
Ohms	600-50M
RPM Range	30-9000/60-12,000



Item	Combustion Analyzer Kit
Type	InTech Residential
Fuel Type	5 Pre-Programmed Fuels Options, Natural Gas, Oil #2, Oil #6, Kerosene, B5, And Propane/LPG
Efficiency	0.1 to 100%



Item

Chase Concrete
Air Indicator Kit

Complies With
Includes

Meets AASHTO T199
Air Indicator,
Cleaning Brush
Warranty



Item

Paperless Recorder

Voltage Range

0-250mVDC, 0-
1.25VDC, 0-2.5VDC, 0-
5VDC, 0-12.5VDC, 0-
25VDC

Current Range

4-20mADC, 0-20mADC,
10-50mADC, 0-
50mADC

Thermocouple

J, K, T, E

Item

Analog Multimeter

Max. AC Volts

1000

Max. DC Volts

1000

Max. DC Amps

10A

Max. Ohms

20 megohm

Decibels

-20 to +50 dB

Audible Continuity

Yes

Mirrored Scale

Yes



Item

Mini Air Ionizer

Features

Small, Versatile Blower
Available For Equipment
Or Local Area Ionization
Standards
UL/C-UL/CE For Global
Acceptance Includes
Mounting Bracket

Standards

[93]

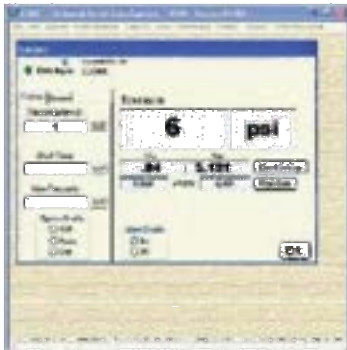


Item
For Use With

Hydrophobic Particulate Filter
Bacharach Portable
Area Gas Refrigerant
Monitor

Package Quantity

1



Item
For Use With
Features

Data Acquisition System
Mfr. No. 6530
Readings Are Saved to A
File That Can Be
Viewed, Printed or
Merged In A Report
Includes

Includes

Cable and Software

Item
Length (Ft.)
Length (M)
Measuring Range
Includes
Manufacturers Warranty

High-Low Detector
10
3
+/-0 to 1/4"
Instructions
6 Months



Item
Connection Size
Length
Pressure Range
Max. Temp.
Body Material

Test Plug
1/2" NPT
1-1/2"
0 to 1000 psi
302 Degrees
Lead Free Brass

[94]

Item	Insulated Tool Kit
Number of Pieces	10
Electrical Tools	2
Number of Pliers	3
Number of Screwdrivers	5
Insulated / Uninsulated	Insulated



Item	Cutter Bundle
Cleaning Area	8"
For Use With	Mfr. No. M5-1 and M5-1V
Includes	Felt Washers, Square Hole Washers, and Cotter Pins

Item	Rip Claw Hammer
Head Weight (Oz.)	16.0
Overall Length (In.)	13
Handle	Fiberglass, Axe-Style
Face	Smooth



Item	Heat Gun
Power Source	Electric
Voltage	120VAC
ESD Safe	No
Temp. Settings	Adjustable
Temperature	120 Degrees to 1200 Degrees F
Air Volume	13.0 cfm
Watts	1600

[95]



Item
Material
Number of Pieces
Overall Length (In.)
Application For Use

Pick And Hook Set
Steel Shaft, Plastic Grips
4
6
In A Variety Of
Applications



Item
Voltage
Blade Dia.
Arbor Size
No Load RPM
Amps
Corded/Cordless
Guard Type
Handle Type

Chop Saw
120
14"
1"
1300
15
Corded
Automatic Retracting
Trigger

Item
Nut Driver Shank Style
SAE or Metric
Nut Driver Length
Number of Pieces
Insulated
ESD Safe

Nut Driver Set
Hollow Round
SAE
3"
7
No
No



Item
Tool Weighing
Cable Length
Ratchet Lock
Tension
Features

Tool Balancer
1.00 to 2.00 lb.
5 ft.
No
Adjustment Knob
3 Suspension Points

[96]

Item
Voltage
Battery
Lamp Type
Lumens
Focus
Light Output Mode
Corded/Cordless

Cordless Flashlight
20.0
Included
LED
110
Fixed
High
Cordless



Item
Capacity
Characteristics
Cuts
Length (In.)

Banding Tool
3/16" to 3/8" Band
Widths
Applies Band, Locks and
Tail
9.7

Item
Dimension Type
Number of Pieces
Cutting Dia.
Body Material
Max. Workpiece

Gasket Cutter Kit
SAE
27
1/4 to 13"
Brass
3/4"



Item
Amps
Impact Energy
Blows /Minute
Drive System
Handle Type
Voltage

Demolition Hammer Kit
13.5
5.9 ft.-lb.
1430 to 2840
SDS Max
D-Handle
120VAC

[97]



Item
Max. Chuck Dia. (In.)
Quill Dia. (In.)
Window Material
Body Material
Color

Drill Press Guard
3
1-3/4 to 3-1/2
Polycarbonate
Aluminium
Bright Orange



Item
Voltage
Battery
Chuck Size
Brushless Motor
No Load RPM

Cordless Hammer Drill
Kit
20.0
Included
1/2"
Yes
0 to 450/0 to 1300/0 to
2000

Item
Voltage
Battery Capacity
Cordless Tool Battery
Brushless Motor
Number of Batteries
Series

Mud Mixer
18.0
5.0 Ah
Li-Ion
Yes
2
M18



Item
Type
Cable Type
Min. Cable Size
Max. Cable Size
Max. Load

Cable Pulling Jaw Grip
Haven
Guy or Messenger Steel
Strand
14 B&S 0.06"
2 B&S 0.25"
2500 lb.

[98]

SAFETY, MECHANICAL, CIVIL, ELECTRICAL & SCAFFOLDING MATERIALS



VENDOR APPROVED



 www.iigcest.com



الإبداع المستقل
INDEPENDENT INNOVATION

P.O. Box: 2654, Al-Jubail 31951, Kingdom of Saudi Arabia
Tel Fax: +966 13 3627417. Mob: +966 0538 688 454
E-mail: info@iigcest.com, sales@iigcest.com